



## FOR IMMEDIATE RELEASE

**International Editorial Contacts:**  
Toshiba Corporation  
Corporate Communications Office  
<http://www.toshiba.co.jp/contact/media.htm>

**U.S. Editorial Contact:**  
Bob Maples  
Maples Communications, Inc.  
(949) 855-3555  
bmaples@maples.com

### **New Operating Structure for Toshiba's HDD Business**

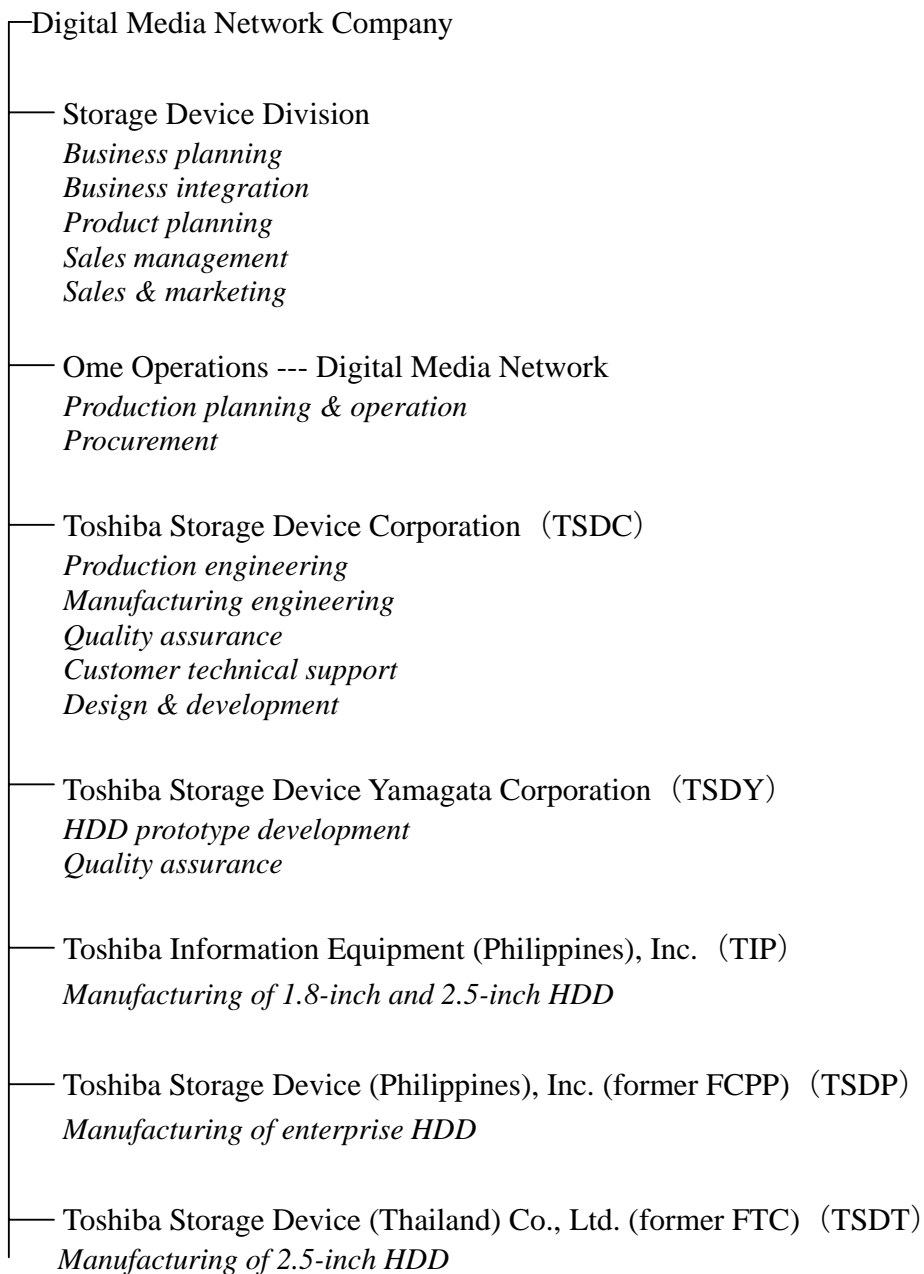
**TOKYO, Japan (October 1, 2009)** – Toshiba Corporation (TOKYO: 6502) today announced that it has completed the transfer to its control of Fujitsu Limited's hard disk drive (HDD) business and that it will introduce a new operating structure for the HDD business.

On April 30, 2009, Toshiba and Fujitsu announced the conclusion of a definitive agreement on the transfer of Fujitsu's hard disk drive (HDD) business to Toshiba. The companies have now carried out all necessary procedures and today completed the transfer. Toshiba will promote maximization of synergy with Fujitsu's enterprise HDD business and technology, and expand its HDD business.

Under the new business structure, Toshiba will reinforce its already strong market position as a leading vendor of small form factor HDDs, expand its enterprise HDD business and technology, and develop SSD products for servers and enterprise storage systems by integrating its NAND flash memory technology with Fujitsu's enterprise HDD technology. Moreover, Toshiba will promote a winning performance in a severe business environment by expanding its product line-up and enhancing its ability to deliver competitive, high quality products. Toshiba's ultimate objective is to be an industry leader offering total storage solutions and services that meet a broad range of customer needs.

**Toshiba HDD Operating Structure after October 1<sup>st</sup>**

**Toshiba Corporation**



**Outlines of New Companies**

1. Company Name: Toshiba Storage Device Corporation (TSDC)
2. Capital: 350 million yen

## New Operating Structure for Toshiba's HDD Business

### Page 3

3. Shareholding ratio: Toshiba Corporation 80.1%  
Fujitsu Limited 19.9%
4. Representative director Kazuyoshi Yamamori
5. Location: 1-1, Shibaura 1-Chome, Minato-ku, Tokyo, Japan
6. Employees: approx. 1,000

1. Company Name: Toshiba Storage Device Yamagata Corporation (TSDY)
2. Capital: 10 million yen
3. Shareholding ratio: Toshiba Storage Device Corporation 100%
4. Representative Director Hiroshi Okamura
5. Location: 5400-2, Ooaza Higashine Kou, Higashine City, Yamagata, Japan
6. Employees: approx. 100

1. Company Name: Toshiba Storage Device (Philippines), Inc. (TSDP)
2. Capital: US\$ 113.3 million (approx. 11.3 billion yen)
3. Shareholding ratio: Toshiba Storage Device Corporation 100%
4. Representative director Isao Morita
5. Location: Carmelray Industrial Park, Canlubang, Calamba, Laguna, Philippines
6. Employees: approx. 3,000

1. Company Name: Toshiba Storage Device (Thailand), Co., Ltd. (TSDT)
2. Capital: 1 billion baht (approx. 3 billion yen)
3. Holding ratio: Toshiba Storage Device Corporation 100%
4. Representative director Minoru Iriko

**New Operating Structure for Toshiba's HDD Business**

**Page 4**

5. Location: 60/90  
(Navanakorn Industrial Estate Zone 3) Moo 19,  
Phaholyothin Rd., Klongluang, Pathumthani  
12120, Thailand
6. Employees: approx. 3,900